

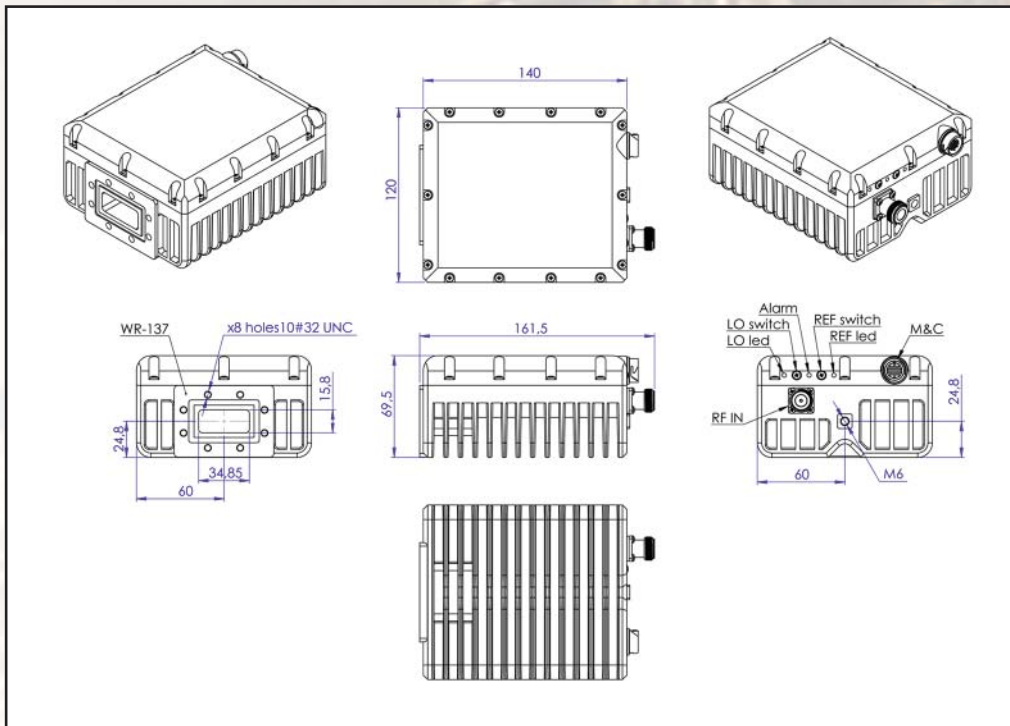


12W Full 5.85-7.05 GHz C-Band BUC

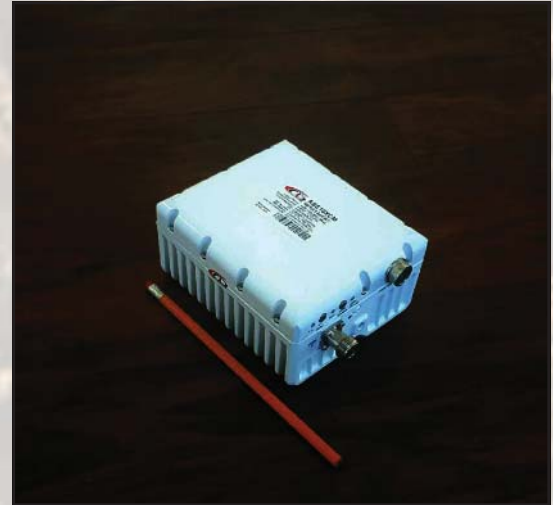
KEY FEATURES

- ◆ Output frequency 5.850-7.05 GHz
- ◆ Based on GaN technology which enables high efficiency, low power consumption and high reliability.
- ◆ Double- L.O. (manually switchable 4.9 & 5.5 GHz)
- ◆ Incomparable low power consumption (44W max)
- ◆ Advanced M&C interface - combined RS-232/485 + optional FSK
- ◆ Auto-ranging 15-60 VDC powering option
- ◆ Digital temperature compensation
- ◆ Power and lock status LED
- ◆ Field-exchangeable (F/N) IF connector
- ◆ Internal 10MHz high stability 10^{-8} reference (optional)
- ◆ RoHS compliant
- ◆ Three-year warranty

Mechanical Drawing



ABE12XCM / ABE12XCMF



This smallest and lightest 12W L-To C-Band Block Up Converter is based on GaN technology. It is designed to be mounted on the feed horn. High power efficiency resulting in the low current (≤ 1.5 amps @ 24 VDC). The unit covers all three C-Band sub-bands: Standard (5.850-6.425 GHz), Palapa (6.365-6.725 GHz) and Insat (6.725-7.05 GHz).

