



Bias Tee

KEY FEATURES

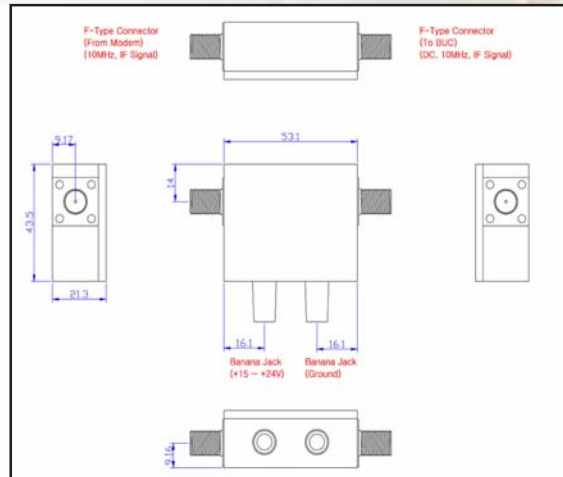
- ◆ Bandwidth 87 to 2 GHz
- ◆ IF and 10 MHz passed through
- ◆ Up to 6 Amps DC input
- ◆ - -+) VDC power input
- ◆ “N” or “F” RF interface options
- ◆ Two-year warranty

ABT6AF / ABT6AN

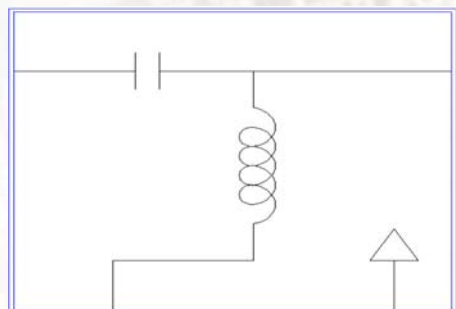


This small and efficient unit provides DC supply to a BUC (DC power supply separate) in case a modem cannot supply sufficient power or doesn't provide BUC power at all. The unit passes L-Band signal and 10MHz reference signal and injects up to 6A DC current.

Mechanical Drawing



Electrical



TECHNICAL SPECIFICATIONS

| | |
|-------------------|--|
| RF frequency | DC to 2 GHz |
| Voltage | 9 – 75 VDC |
| Current | 6 Amps max |
| Insertion loss | 0.8dB max @10MHz 0.8dB max @950MHz–1.45GHz |
| DC interface | Banana jack |
| RF interface | ABT6AF From modem & to BUC: F-type ABT6AN From modem & to BUC: N-type |
| Impedance | ABT6AF 75 ohms ABT6AN 50 ohms |
| Temperature range | |
| operating | -40 deg C to +55 deg C |
| storage | -40 deg C to +75 deg C |
| Dimensions | 53.1 (L) x 43.55 (W) x 21.3 (H) mm 2.1" (L) x 1.7" (W) x 0.9" (H) |
| Weight | 150 g (25 oz) max |